

TERRATEK

Cordless Drill

TPDC18134K



User Manual – Please read and retain for future reference.

Exploded Assembly Diagram

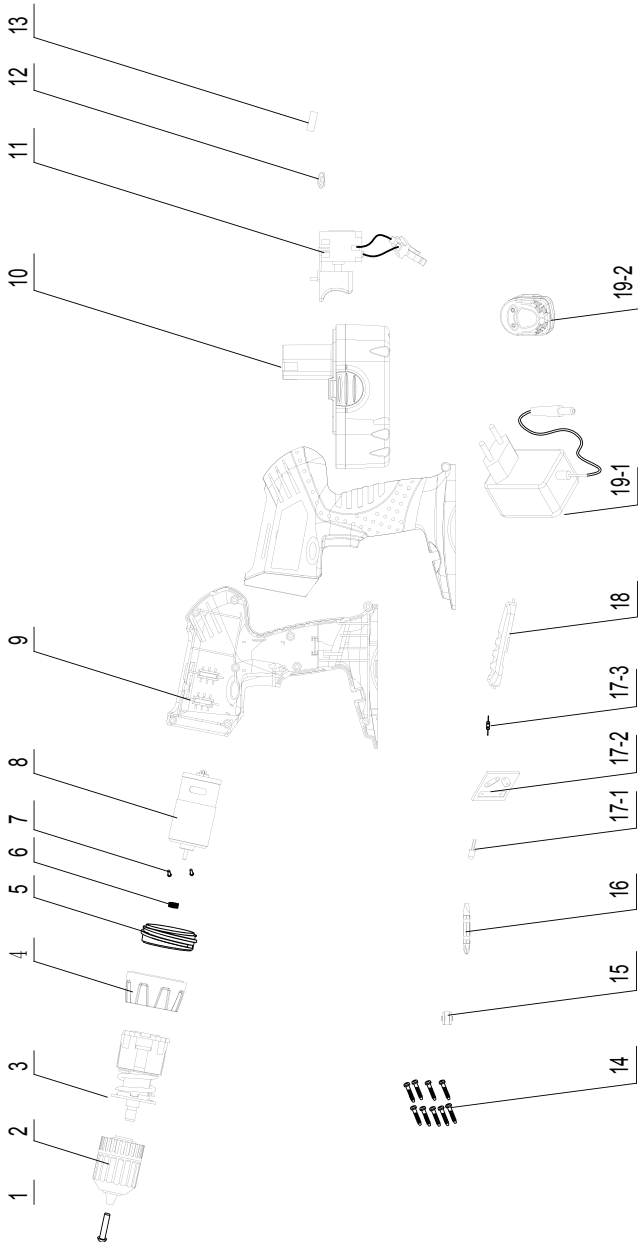




Fig.1

- 1 Chuck
- 2 Torque control ring
- 3 For. /Rev./Lockout
- 4 On/Off/Var. speed switch
- 5 Battery
- 6 Battery clip

Contents

Parts List

Technical Information

Safety Instructions

Using your drill

Maintenance

Warranty

Parts List

1	Anti-screw
2	Chuck
3	Gear unit
4	Torque
5	Inner torque
6	Motor gear
7	Screw
8	Motor
9	Shell of machine
10	Battery
11	Switch
12	Handspike
13	Level bubble
14	Screw
15	Clip
16	Double end bit
17	LED
17-1	Light
17-2	Light circuitry board
17-3	Resistance
18	Decorative cover
19-1	Adapter
19-2	Charger Base

Technical Information

Voltage:	18V DC
Battery:	Ni-Cd 0.8Ah
No load speed:	0-550RPM
Torque control:	16 positions
Chuck:	0.8-10mm
Charger:	3-5 hours
Weight NW/GW:	4.3 /7.27 lbs



Read this entire manual before using this product. Failure to do so can result in serious injury. Save this manual for future reference.

Copyright© 2011 by ACL Group (Intl) Ltd. All rights reserved. This manual or any artwork contained herein must not be reproduced in any shape or form without the express written consent of Terratek Intl. Ltd. Diagrams within this manual may not be drawn proportionally. Due to continuing improvements, actual product may differ slightly from the product described herein.

Read and Keep This Manual

Please read carefully all instructions within this manual. Failure to follow all safety warnings can result in serious personal injury. The term "Power Tool" in all of the following warnings refers to your mains operated (corded) or battery operated (cordless) power tool.

Important SAFETY Information



This symbol is to warn you of potential personal injury hazards. Please read carefully the notes along side this warning to avoid possible injury or death.

General Safety Rules



WARNING! Read all instructions. Failure to follow all instructions listed below may result in electric shock, fire and/or serious injury. The term "power tool" in all of the warnings listed refers to corded or cordless power tools.

Work area safety

Keep work area clean and well lit. *Cluttered or dark areas invite accidents.*

Do not operate power tools in explosive atmospheres, such as in the presence of flammable liquids, gases or dust. *Power tools create sparks which may ignite the dust or fumes.*

Keep children and bystanders away while operating a power tool. *Distractions can cause you to lose control.*

Electrical safety

Before use, ensure that the power outlet you are using matches the plug on your power tool and that the voltage of the outlet matches that of your power tool.

Only use grounded extension cords with power tools fitted with proper plugs and if using outdoors ensure any extension cord is suitable for outdoor use.

Always try to avoid body contact with grounded surfaces, such as radiators, cooking ranges and any other fixed appliance with metal surfaces.

Do not expose your power tool to wet or damp conditions and NEVER use in rain. Check regularly the power cord of your machine and any extension cord that you are using for damage.

Do not carry or pull the machine with the power cord.

Ensure the cord is clear from hot surfaces, oil or sharp objects.

Personal safety

Never use your power tool whilst under the influence of alcohol, drugs or medication.

Tiredness can often cause accidents, stay alert.

Never use your power tool without the correct guards in place.

Always use ANSI approved eye protection and dust mask. Non slip safety shoes and hearing protectors should be worn at all times when using your power tool.

Ensure any dust collecting device supplied with your power tool is connected correctly before use.

Ensure all loose clothing, long hair or jewelry is kept clear of the power tool.

Before plugging your power tool into the power outlet ensure the power tool is in the OFF position.

Check that wrenches or adjusting keys have been removed. Any wrench or key left attached to a moving part can result in injury.

Power tool use and care.

Keep your power tool clean and well serviced at all times.

Never adjust or service any power tool before disconnecting from the mains electricity supply.

Always use the correct tool for the job.

Never force the tool to work harder than it is designed to do.

Never use your power tool with broken parts such as switches, guide fences or leg stands.

ALWAYS keep your power tools away from children.

Keep cutting tools sharp to ensure less stress on the motor.

Only have your power tool serviced by a qualified repair agent using manufacturers recommended parts.

WARNING: For your own safety read Instruction Manual before operating your tool.

A) Wear eye protection.

B) Keep hands away from drill bit.

C) Do not operate without guards in place.

D) Do not perform any operation freehand.

E) Never grab chuck while it is turning.

F) Turn off tool and wait for tool to stop before moving workpiece or changing settings.

G) Remove battery before changing drill bit or servicing.

Safety Instructions

Read this owner's manual completely and make sure you understand all of its safety guidelines.

1. **KEEP GUARDS IN PLACE** and in working order.
2. **REMOVE ADJUSTING KEYS & WRENCHES.** Before turning on the power tool, make sure the keys and adjusting wrenches have been removed.
3. **KEEP WORK AREA CLEAN.** Cluttered areas and benches invite accidents.
4. **ALWAYS REMAIN ALERT WHEN THE SAW IS IN USE.** Inattention on the part of the operator may lead to serious injury.
5. **DON'T USE IN A DANGEROUS ENVIRONMENT.** Don't use power tools in damp or wet locations or expose them to rain. Keep work area well lit.
6. **KEEP CHILDREN AWAY.** All visitors should remain at a safe distance from work area.
7. **MAKE WORKSHOP CHILD-PROOF** with padlocks, master switches or by removing starter keys.
8. **USE THE RIGHT TOOL.** Don't force a tool or attachment to do a job for which it was not designed.
9. **USE THE PROPER EXTENSION CORD.** Make sure your extension cord is in good condition. When using an extension cord, be sure to use one heavy enough to carry the current your product will draw. An undersized cord will cause a drop in line voltage resulting in loss of power and overheating.
10. **DON'T FORCE THE TOOL.** It has been designed to operate at maximum safety and performance levels.
11. **DO NOT FORCE THE MATERIAL BEING CUT.** Always let the blade cut at its own speed.
12. **WEAR PROPER APPAREL.** Do not wear loose clothing, neckties, rings, bracelets or other jewelry which may get caught in moving parts. Non-slip foot wear is recommended. Wear protective hair covering if you have long hair.
13. **ALWAYS USE SAFETY GLASSES.** Also use face or dust mask for commercial cutting operations. Everyday eyeglasses only have impact-resistant lenses, they are NOT safety glasses.
14. **SECURE WORK.** Use clamps or a vise instead of your hand to hold work when practical. This safety precaution allows for proper tool operation using both hands.
15. **DON'T OVERREACH.** Keep proper footing and balance at all times.
16. **MAINTAIN TOOLS WITH CARE.** Keep tools clean and in good working condition for maximum safety performance. Follow instructions for lubricating and changing accessories.
17. **DISCONNECT TOOLS BEFORE SERVICING** – when changing accessories, such as blades, bits, cutters, etc.
18. **REDUCE THE RISK OF UNINTENTIONAL STARTING.** Make sure switch is in OFF position before plugging in.
19. **USE RECOMMENDED ACCESSORIES.** Consult the owner's manual for recommended accessories. The use of improper accessories may increase risk of injury.
20. **MAKE SURE YOU USE THE CORRECT TOOL** for the job you are doing.
21. **NEVER STAND ON TOOL.** Serious injury could occur if the tool is tipped or if the cutting tool is unintentionally contacted.
22. **CHECK DAMAGED PARTS.** Before further use of the tool, damaged part(s), (i.e., guard) should be carefully checked to determine that it will operate properly and perform its intended function. Check for alignment of moving parts, binding of moving parts, breakage of parts, mounting and any other condition that may affect the saw's operation. A guard or other part that is damaged should be properly repaired or replaced.
23. Replace damaged bits immediately. **DO NOT USE DAMAGED BITS.** They may cause bodily injury.
24. **DIRECTION OF FEED.** Feed work into the blade against the direction of rotation of the blade only.
25. **DO NOT ALTER THE PLUG.**
26. **NEVER LEAVE TOOL RUNNING UNATTENDED.** Turn power off. Don't leave tool until it comes to a complete stop.

This power tool is supplied with all the relevant safety guards and features, it should be checked before every operation, and this manual should be read and kept in a safe place. Whilst we warn of all the possible risks attached to using power tools any operator must have read and understood the manual and apply their own caution and common sense when using this power tool.

Following this guide will greatly reduce your risk of electric shock or injury.

Only use qualified repair agents to service this power tool.
Only use qualified electrician to repair any damaged wiring.
NEVER remove the grounding prong from the power toll or extension cord.

Power Extension Cords

When using any extension cord the machine will suffer a power reduction due to the drop in voltage caused by the length of the cord. This can be partially offset by selecting extension cords with lower gauge wire.

Check all extension cords for damage before use.

Avoid sharp objects.

Do not position the cord where it could be subject to traffic passing over it.

Symbols

IMPORTANT: Some of the following symbols may be used on your tool.


V.....volts

A.....amperes

Hz.....hertz

~.....alternating current

.../m.....revolutions per minute

class II construction (double insulated)

Kg.....kilograms

n₀.....No load speed

CEConforms to European Harmonised New Approach Directives

DCDirect Current

Unpacking

Carefully remove the product and any accessories from the box. Make sure that all items listed in the packing list are included.

Packing List

A) Drill

B) Battery

C) Charger

Battery use and care

A battery operated tool with integral batteries or a separate battery pack must be recharged only with the specified charger for the battery.

A charger that may be suitable for one type of battery may create a risk of fire when used with another battery.

Use battery operated tool only with specifically designed battery pack.

Use of any other batteries may create a risk of fire.

NEVER place hands or other body parts near the drill bit or chuck during operation.

Hold the drill by its handle only. Because the cordless driver drill operates by battery power, be aware of the fact that it can begin to operate at any time.

When battery pack is not in use, keep it away from other metal objects like paper clips, coins, keys, nails, screws, or other small metal objects that can make a connection from one terminal to another. Shorting the battery terminals together may cause burns or a fire.

Charging the battery pack

Charge battery for 3-5 hours only, when you plug battery into the charger the "GREEN" light will come on, **there is no light to indicate the battery is fully charged, charge only for 3 to 5 hours,** unplug charger and remove battery from charger.

Battery charger LED function

Charger plugged in: Red light "ON"

Battery charging: Green light "ON"

WARNING: Improper use of the battery or battery charger can lead to serious injury.

To avoid these injuries:

- A) **NEVER** disassemble the battery.
- B) **NEVER** incinerate the battery, even if it is damaged or is completely worn out.
The battery will explode in a fire.
- C) **NEVER** short-circuit the battery.
- D) **NEVER** insert any objects into the battery charger's air vents. Electric shock or damage to the battery charger may result.
- E) **NEVER** charge outdoors. Keep the battery away from direct sunlight and use only where there is low humidity and good ventilation.
- F) **NEVER** charge when the temperature is below 0°C (32°F) or above 40°C (104°F).
- G) **NEVER** connect two battery chargers together.
- H) **NEVER** insert foreign objects into the hole for the battery or the battery charger.
- I) **NEVER** use a booster transformer when charging.
- J) **NEVER** use an engine generator or DC power to charge.
- K) **NEVER** store the battery or battery charger in places where the temperature may reach or exceed 40°C (104°F).
- L) **ALWAYS** operate charger on standard household electrical power (230 volts).
Using the charger on any other voltage may overheat and damage the charger.
- M) **ALWAYS** wait at least 15 minutes between charges to avoid overheating the charger.
- N) **ALWAYS** disconnect the power cord from its receptacle when the charger is not in use.

EXCHANGING THE BATTERY PACK

Removing battery pack: Press the two buttons (Fig.1) and slide the battery pack down to remove.

Inserting battery pack: Slide the battery pack into the holder on the underside of the handle until it latches into place.

Using your drill

VARIABLE SPEED CONTROLLED TRIGGER SWITCH

Your tool is equipped with a variable speed trigger switch (Fig.1). The tool speed can be controlled from the minimum to the maximum nameplate RPM by the pressure you apply to the trigger. Apply more pressure to increase the speed and release pressure to decrease speed.

FORWARD/REVERSING LEVER & TRIGGER LOCK

Your tool is equipped with a forward/ reversing lever and trigger lock (Fig.1) located above the trigger. This lever was designed for changing rotation of the chuck, and for locking the trigger in an "OFF" position to help prevent accidental starts and accidental battery discharge. For forward rotation,

(with chuck pointed away from you) move the lever to the far left. For reverse rotation move the lever to the far right. To activate trigger lock move lever to the center "off" position.

MOUNTING AND DISMOUNTING THE BIT

Mounting the bit

Loosen the sleeve by turning it toward the left (in the counterclockwise direction as viewed from the front) to open the clip on the keyless chuck. After inserting a driver bit, etc., into the keyless drill chuck, tighten the sleeve by turning it toward the right (in the clockwise direction as viewed from the front).

NOTE: If the sleeve becomes loose during operation, tighten it further.

The tightening force becomes stronger when the sleeve is tightened.

DISMOUNTING THE BIT

Loosen the sleeve by turning it toward the left (in the counterclockwise direction as viewed from the front), and then take out the bit.

DRILLING

Place the bit on the work surface and apply firm pressure before starting. Too much pressure will slow the bit and reduce drilling efficiency. Too little pressure will cause the bit to slide over the work area and dull the point of the bit. If the tool begins to stall, reduce pressure slightly to allow the bit to regain speed. If the bit binds, reverse the motor to free the bit from the workpiece.

TORQUE ADJUSTMENT

By turning the adjustment ring (Fig.1) the required torque can be adjusted. The arrow aligns with the adjusted state.

Maintenance

WARNING: To reduce the risk of injury, always unplug the charger and remove the battery pack from the charger or tool before performing any maintenance. Never disassemble the tool, battery pack or charger.

Disposal of the exhausted battery

WARNING: Do not dispose of the exhausted battery. The battery must explode if it is incinerated. The product that you have purchased contains a rechargeable battery. The battery is recyclable. At the end of its useful life, under various state and local laws, it may be illegal to dispose of this battery into the municipal waste stream. Check with your local solid waste officials for details in your area for recycling options or proper disposal.

Disposal

Power tools, accessories and packaging should be sorted for environmentally-friendly recycling.

Only for EC countries:



Do not dispose of power tools into household waste!

According to the European Directive 2002/96/EC on waste electrical and electronic equipment and its incorporation into national right, products that are no longer suitable for use must be separately collected and sent for recovery in an environmentally-friendly manner.

Battery packs/batteries:



Ni-Cad:

Do not dispose of battery packs/batteries into household waste, water or fire. Battery packs/batteries must be collected, recycled or disposed of in an environmentally-friendly way.

Only for EC countries:

Defective or dead batteries must be recycled according to the directive 2006/66/EC.

Declaration of Conformity

We ACL Group (Intl.) Ltd, England DN6 8LZ declare that the Cordless Drill has been manufactured according to our full quality assurance procedures.

The declaration is to certify that it conforms to CE, EMC, MD and RoHS directives:

EN55014-1:2006

EN55014-2:1997 /+A1:2001 /+A2:2008

All provisions of Annex 1 of Council Directive 2004/108/EC – EMC directive

EN60335-1:2010

EN60335-2-2:2010

EN60745-2-1:2010

All provisions of Annex 1 of Council Directive 2006/42/EC – Machinery Directive

RoHS 2011/65/EU



A handwritten signature in black ink.

Mr. Alan Garnett, UK QA Manager

Environmental Protection

RECYCLING: WASTE ELECTRICAL PRODUCTS SHOULD NOT BE DISPOSED OF WITH HOUSEHOLD WASTE. PLEASE RECYCLE WHERE FACILITIES EXIST. CHECK WITH YOUR LOCAL AUTHORITY OR RETAILER FOR RECYCLING ADVICE.



Please read the following carefully

ACL Group (Intl) Ltd. and/or its distributor has provided the parts list and assembly diagram as a reference tool only. Neither ACL Group (Intl). Ltd. or its distributor makes any representation or warranty of any kind to the buyer that he or she is qualified to do any repairs or replace any parts of this product. ACL Group (Intl) Ltd. and its distributor expressly state that all repairs or parts replacement should be done by certified or licensed technicians. The buyer assumes all risk and liability arising out of his or her repairs or parts replacement to the original product.

12 Months Limited Warranty

If within 12 months from the date of purchase you experience any problems with your product, please return the product to its distributor/dealer for repair or replacement. This warranty DOES NOT COVER normal wear, or any damage as a result of accidents, misuse, abuse or negligence.

ACL Group (Intl) Ltd
Doncaster, England
Email: info@terratekintl.com
www.terratekintl.com